



## Queen's Assessment Hub

Gibson, A. (2019). *Queen's Assessment Hub: A co-created resource*. ALTNI Annual Event 2019, Belfast, United Kingdom.

[Link to publication record in Ulster University Research Portal](#)

**Publication Status:**

Published (in print/issue): 17/04/2019

**General rights**

Copyright for the publications made accessible via Ulster University's Research Portal is retained by the author(s) and / or other copyright owners and it is a condition of accessing these publications that users recognise and abide by the legal requirements associated with these rights.

**Take down policy**

The Research Portal is Ulster University's institutional repository that provides access to Ulster's research outputs. Every effort has been made to ensure that content in the Research Portal does not infringe any person's rights, or applicable UK laws. If you discover content in the Research Portal that you believe breaches copyright or violates any law, please contact [pure-support@ulster.ac.uk](mailto:pure-support@ulster.ac.uk).

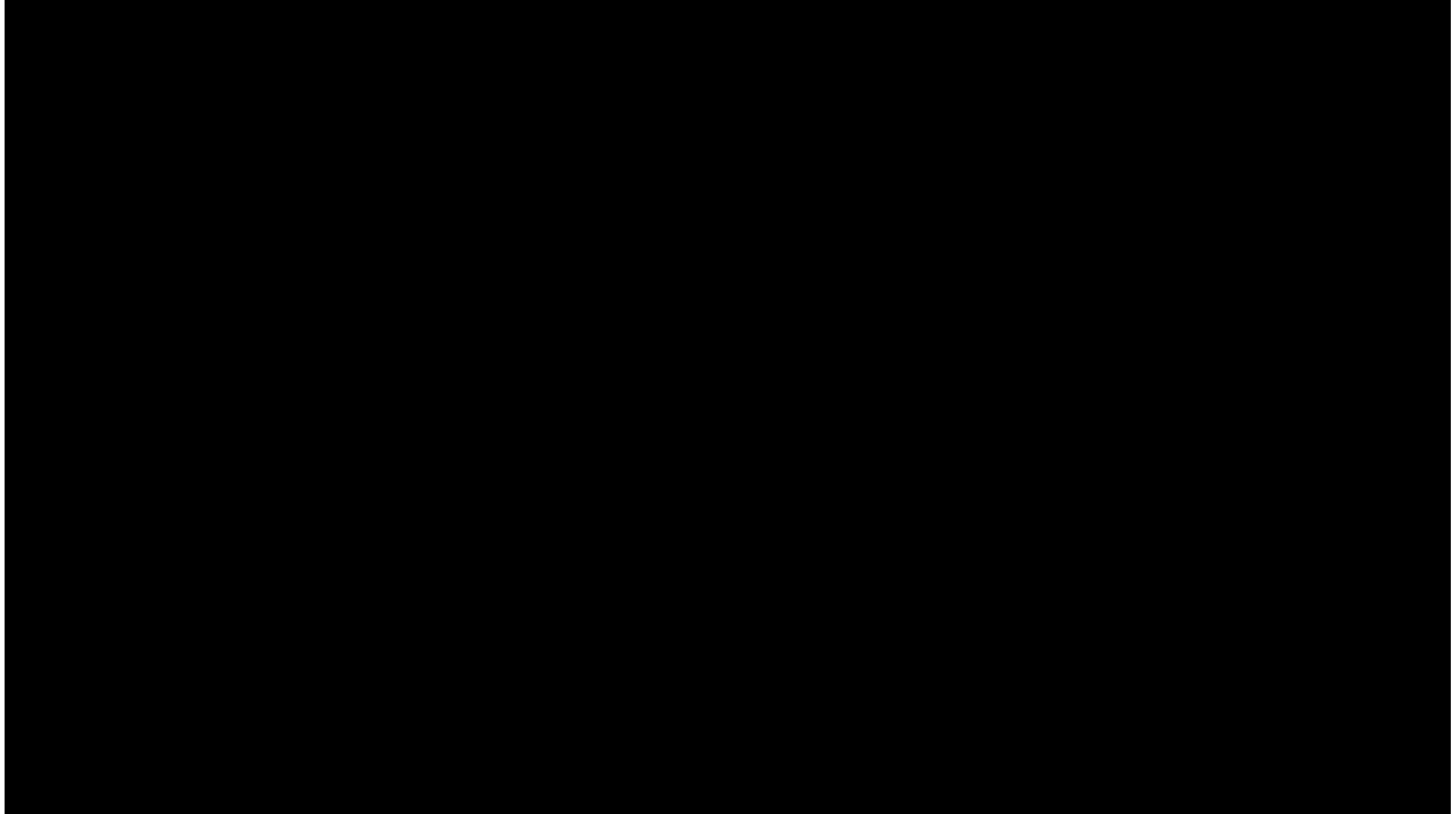
# Queen's Assessment Hub: A co-created resource



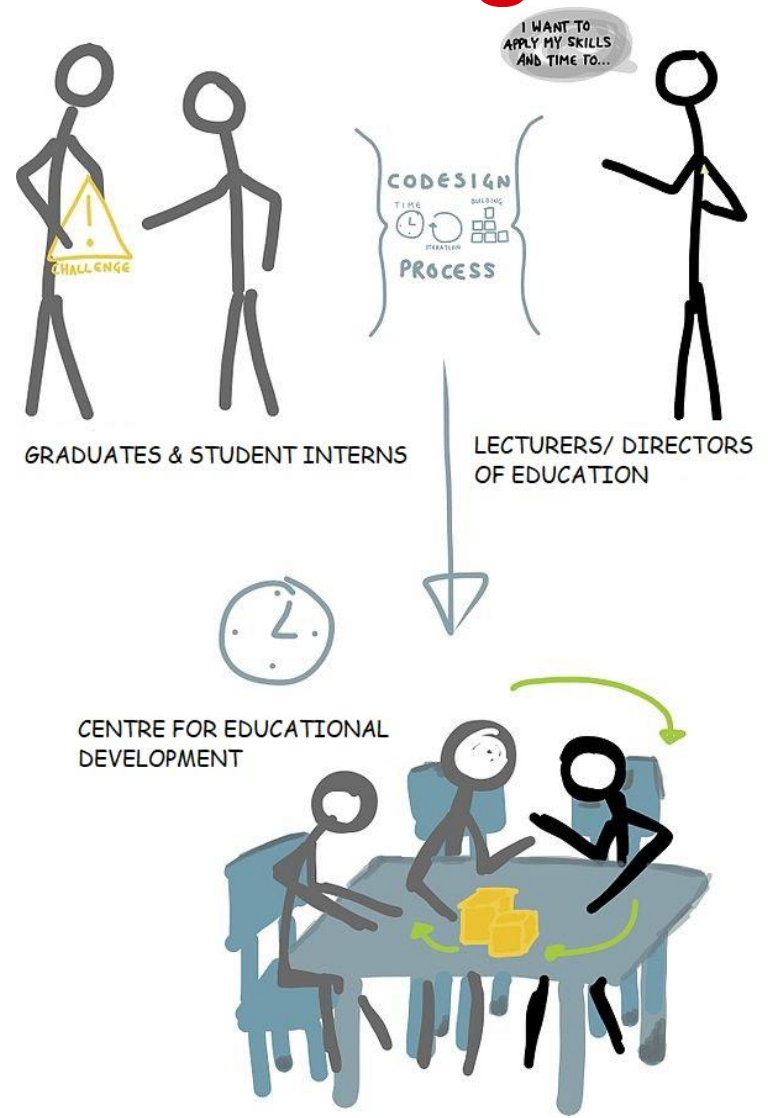
**Aideen Gibson, Niamh Kelly**

Centre for Educational Development

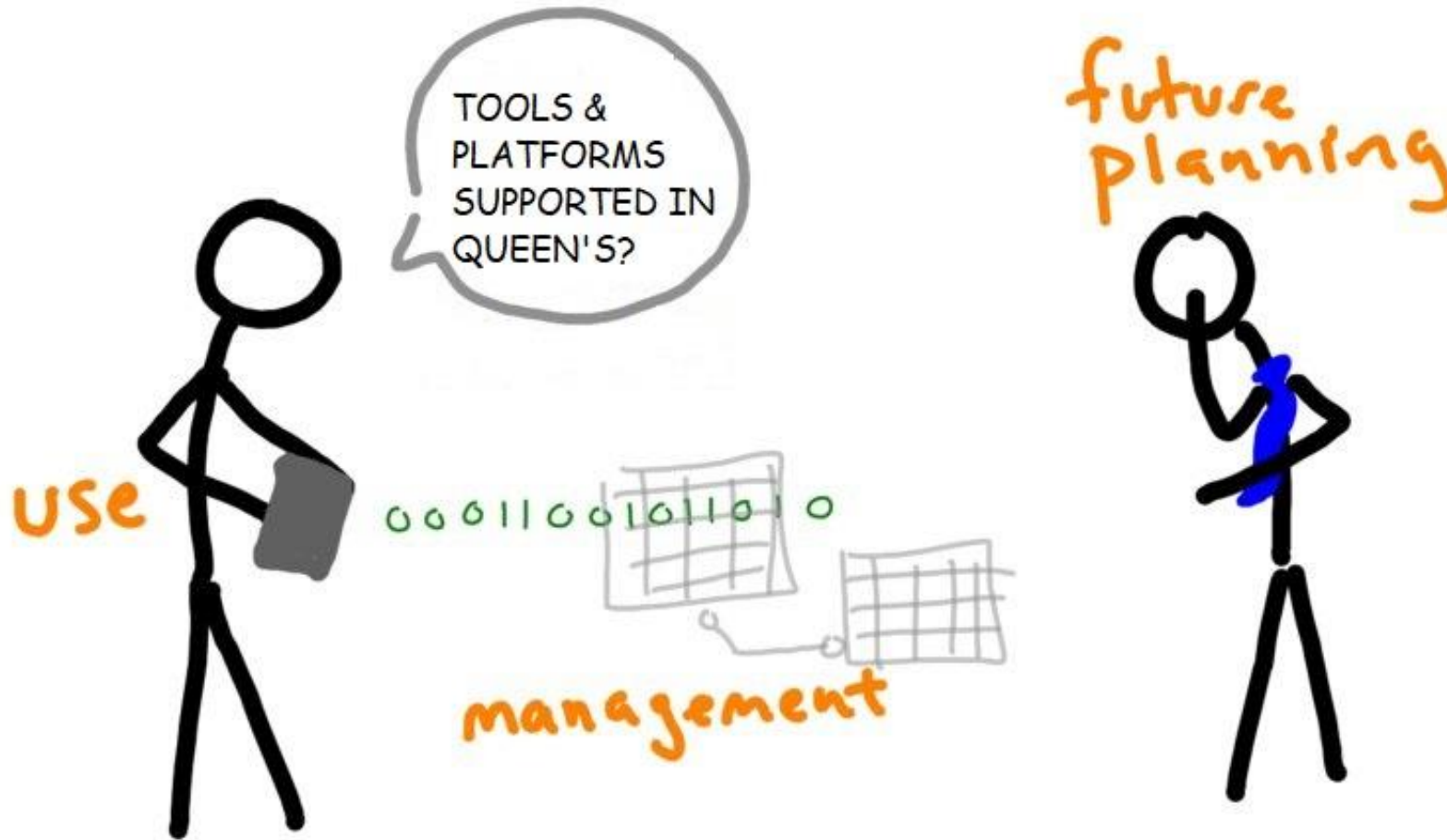
# Enhancing Assessment at Queen's



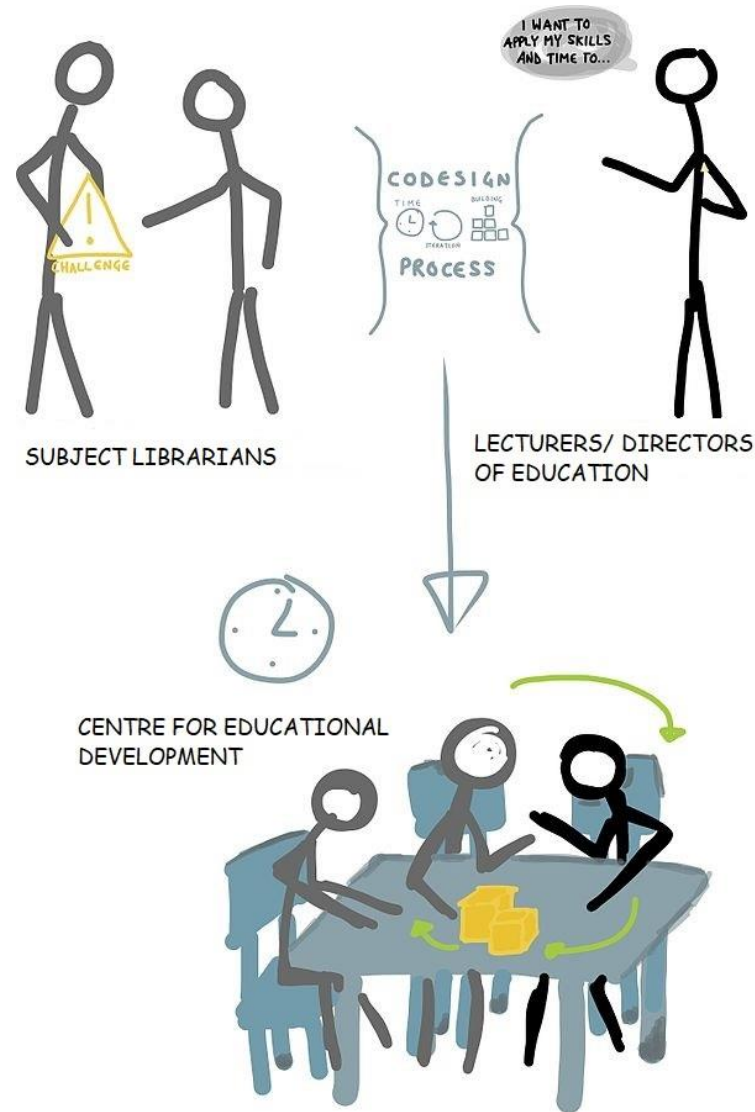
# Collaborative Design and Creation



# Technical Development



# Quality Assurance & Robust Review





[aideen.gibson@qub.ac.uk](mailto:aideen.gibson@qub.ac.uk)

[n.kelly@qub.ac.uk](mailto:n.kelly@qub.ac.uk)

Thank you!

