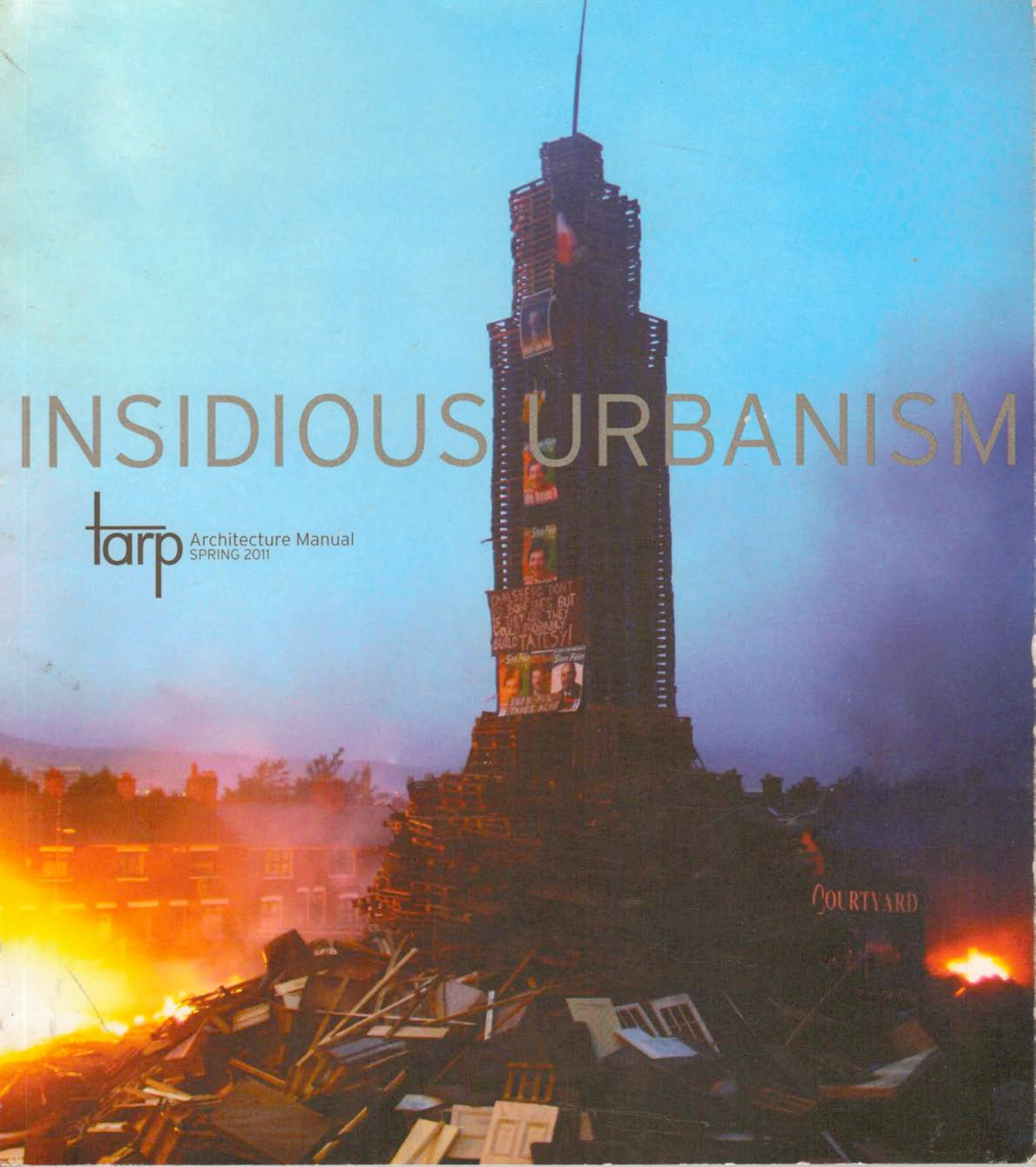


# INSIDIOUS URBANISM

tarp

Architecture Manual  
SPRING 2011





Architecture Manual is produced by the students of  
Pratt Institute Graduate Architecture and Urban Design.

**Managing Editor**

Alpna Gupta

**Senior Editor**

James Williams

**Editorial Staff**

Thomas Holliday

Annette Miller

Hannibal Newsom

Sarah Ruel-Bergeron

Sierra Sharron

**Faculty Advisor**

Erik Ghenoju

**Special Thanks to:**

**Dean** Tom Hanrahan

**Graduate Chair** William Mac Donald

**Assistant Graduate Chair** Philip Parker

**Assistants to the Dean** Kurt Everhart & Pamela Gill

**Graduate Assistants** Erin Murphy & Erika Schroeder

**Donors** David D. Gregory, James Jaworski, Matthew G. Lasner,  
Sarah Le Clerc (tarp editor emeritus), John T. Mancini, Alec S  
Pomnichowski, Teresa Reinhardt, Matt Rymer, Elliott and Eileen  
Sharron, [www.suckerPUNCHdaily.com](http://www.suckerPUNCHdaily.com), Owen Williams

**Supporters** Jonathan Alexander, MK Bretsch, Linda Czopek, Joe  
Eisenberg, Cy Fels, Marilyn Fuss-Los Angeles California, Zachary  
Kenton, Leo Korein, Marinelle Luna, Andrea Lusso, Aldo Parise,  
Paris Associates, Peter Ragonetti (Pratt '04), Teresa Reinhardt,  
Janice Sharron, Jesse Sharron, Tony Stone, Joshua Stylman,  
Billie Anne Williams, Prototype Zero

The **Pratt** School of Architecture for their continued support.

**Cover Image:**

Bonfire Recycling Centre, 2005, Dougal Sheridan and Deirdre  
McMenamin (LID Architecture) with Building Initiative

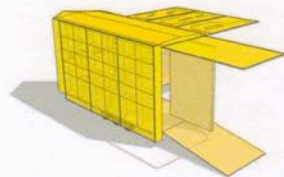
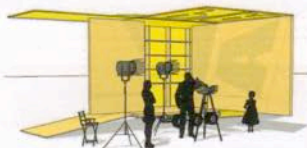
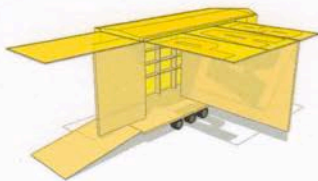
This research project investigated how the vernacular  
phenomenon of Belfast's Urban Bonfires could be re-imagined  
in a less sectarian and environmentally threatening form. The  
incorporation of a recycling centre into a defined public space  
capable of hosting large public fires investigated the potential  
for Belfast to develop its own unique public space typology. The  
project was investigated through workshops with participants  
from environmental groups, the social sciences, community  
representatives, government Agencies, artistic and architectural  
backgrounds, and resulted in the development of a prototypical  
model for a bonfire-recycling center.

For subscription requests or to contact the editors please email  
[tarp@pratt.edu](mailto:tarp@pratt.edu).

## BM-05

## LiD Architecture

Dougal Sheridan &  
Deirdre Mcmenamin  
Dublin



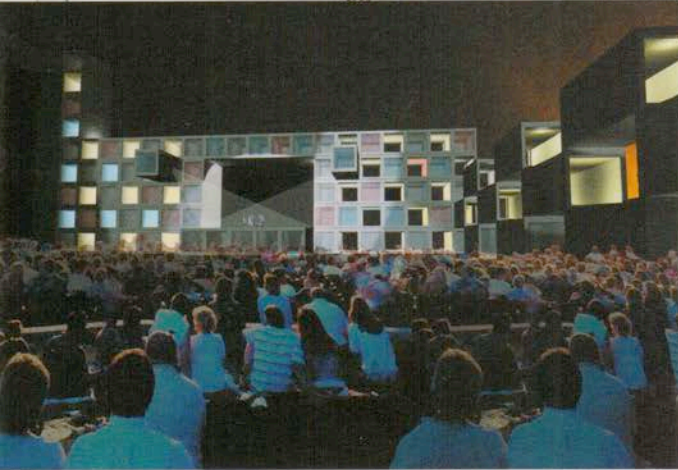
... terrain vague, spaces of indeterminacy, urban wildscapes; the spatial characteristics of these areas can be as diverse as the terminology that attempts to define them. In previous studies of Berlin we have defined them as "any area, space, or building where the city's normal forces of control have not shaped how we perceive, use, and occupy them." They become places in which particular activities, events, initiatives, and subcultures are able to take hold and develop, and the social and cultural dimensions of these spaces contribute significantly to the public realm. We have researched the properties and processes at play in these locations to question how they may inform not only how we intervene in these spaces but also how we operate within the normal mechanisms of practice and approach the making of places generally. By extrapolating these properties and processes we realised how much our praxis both intuitively and self-consciously has been informed by the formative experiences of Berlin.

#### Portable Art Space: Urban Camping

In the Portable Art Space project we explored a strategy of minimal intervention into varied urban/landscape locations to engage with social contexts in a non-imposing, un-institutionalized manner required within the challenging political landscape of Northern Ireland. It was designed to provide the minimum temporary infrastructure required to accommodate an artist (or other agent) with a built-in capacity to adapt to its surroundings.



## PORTABLE ART SPACE



## Dublin Docklands: Post-Boom Wasteland

This project is the competition-winning proposal for a temporary-use response to the urban conditions created by the recent economic crisis that resulted in un-lettable empty buildings and incomplete construction sites in the new docklands area of Dublin. A design strategy to activate important public space central to this area was required. In comparison to Berlin where these spaces were historically the product of a vacuum of jurisdiction, ownership, and control, in Dublin unfinished commercial wastelands have resulted from a financial vacuum. The proposal is for a public space which is highly flexible, adaptable, and robust in nature to enable a diverse program of arts, culture and leisure events to occur, ranging from outdoor concerts, performances, and cinema, to markets and art exhibitions. The proposal is intended to relate to the activity and energy of the adjacent working port and celebrate its temporary nature by utilizing the shipping container, symbol of (stalled) global trade and exchange.

Sheridan, D. (2007) "Berlins Indeterminate Territories: the Space of Subculture in the City" *Field Journal* 1, 1: 97-119. Online. Available HTTP: <http://www.fieldjournal.org/index.php?page=2007-volume-1>.

See also, Sheridan D. (2011) 'Dis-Ordering Public Space: Urban Wildscape Processes in Practice' in A. Jorgensen, R. Keenan (eds.) *Urban Wildscapes* London: Routledge